



Better Decision Making

Power BI – Best Practice Reporting Package for Maconomy

Last updated : March 9, 2026

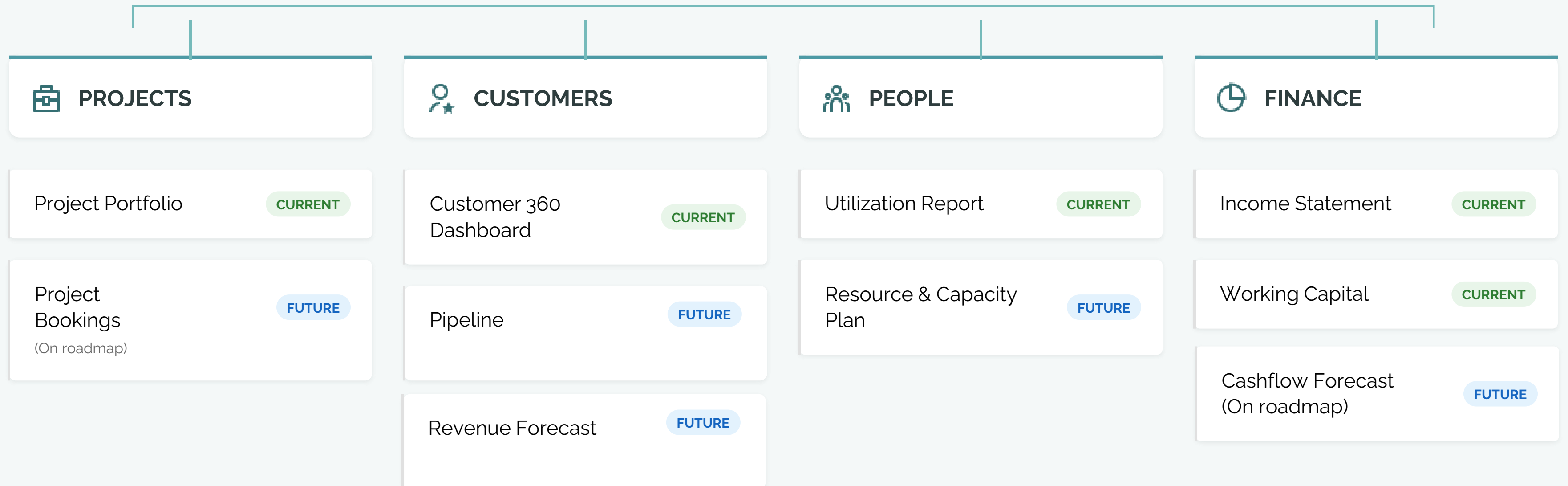


VOLI BEST PRACTICE DASHBOARDS

Integrated Business Intelligence



COMPANY DASHBOARD

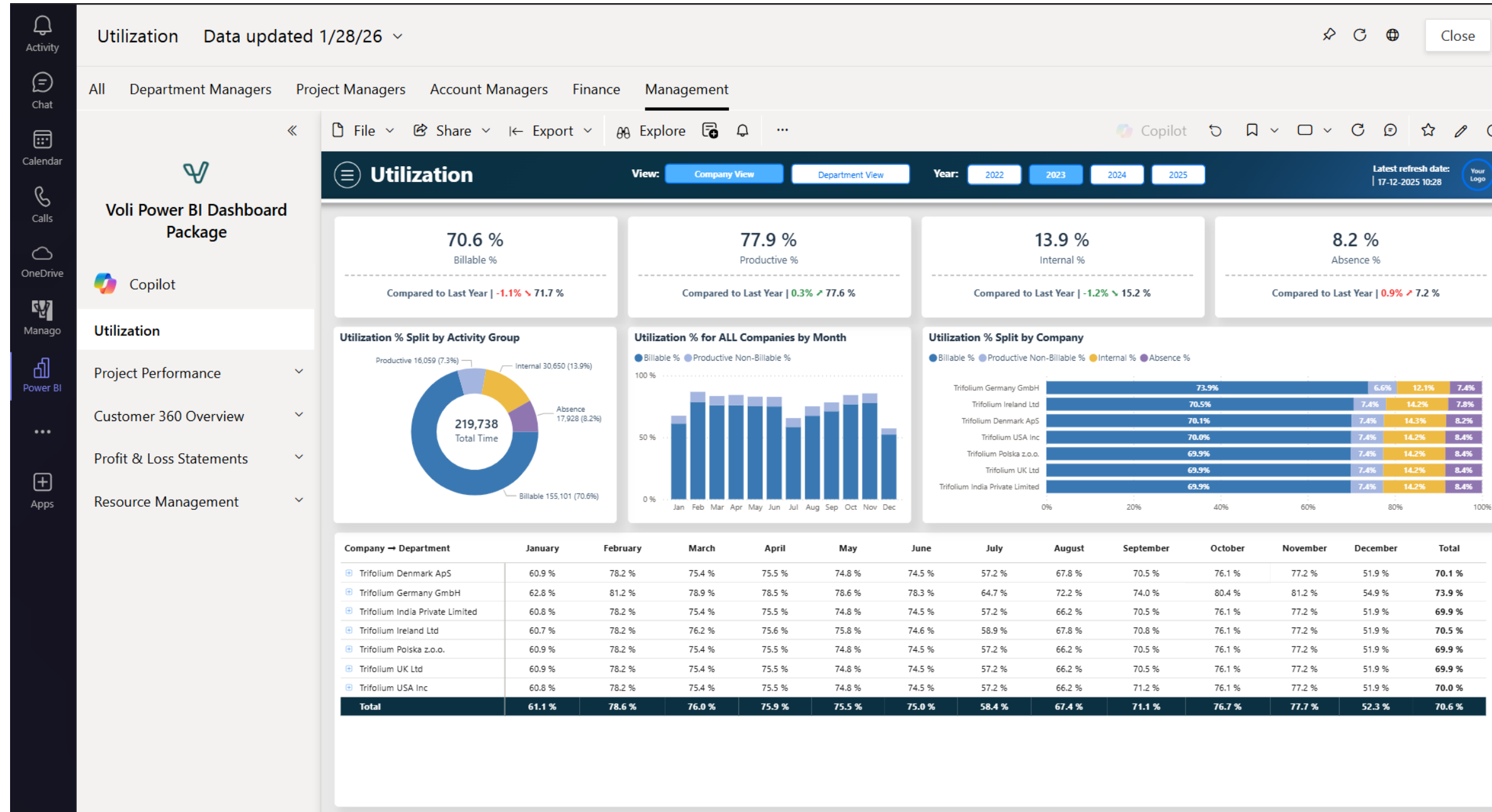


● CURRENT & PAST FOCUS

● FUTURE FOCUS

Each report reflects a number of reports that covers the given area and are presented on the following slides

Power BI - Best Practice Reporting Package For Maconomy



- ✓ We have made our Best Practice Reporting package available – based on Power BI and Maconomy
- ✓ Fully Embedded within Teams or available via web-browser
- ✓ Reports are configured on a Maconomy Power Launch dimension and solution setup – and will need minor or some adjustments based on your specific configuration of Maconomy
- ✓ Designed by experienced Maconomy consultants and former CFO & COO using Maconomy

Power BI in Teams

Embedded analytics within your favorite all-day tool

Single Sign-On (SSO)

Role-based Reporting

Web-browser Access

The screenshot shows a Microsoft Teams window with a Power BI dashboard titled 'Department Utilization'. The dashboard is embedded within the Teams interface, which includes a search bar at the top, a navigation pane on the left, and a 'Filters' pane on the right. The dashboard itself features a dark blue header with the title and filters for 'Department' (Architecture, Construction) and 'Year' (2022, 2023, 2024, 2025). Below the header are four summary cards showing key metrics: Billable % (76.4%), Productive % (82.2%), Internal % (9.4%), and Absence % (8.4%). Each card includes a comparison to the previous year. The main content area contains a table of employee utilization data and a horizontal bar chart showing the utilization percentage for all employees in the department, broken down by Billable % and Productive Non-Billable %.

| Employee | Billable % | Productive Non-Billable % | Internal % | Absence % | Billable Time | Productive Non-Billable Time | Internal Time | Absence Time |
|----------------|------------|---------------------------|------------|-----------|---------------|------------------------------|---------------|--------------|
| Aaron Peirsol | 100.0 % | | | | 537.0 | | | |
| Ada Hegerberg | 70.7 % | 11.0 % | 9.4 % | 8.9 % | 1,522.0 | 236.0 | 202.0 | 192.0 |
| Adam Peaty | 70.1 % | 12.9 % | 9.3 % | 7.7 % | 510.0 | 94.0 | 68.0 | 56.0 |
| Alexandra Wenk | 83.1 % | | 9.2 % | 7.7 % | 1,728.0 | | 192.0 | 160.0 |
| Annie Leonard | 24.4 % | 22.0 % | 44.0 % | 9.6 % | 510.0 | 460.0 | 920.0 | 200.0 |
| Annika Winsnes | 80.0 % | | 8.9 % | 11.1 % | 1,728.0 | | 192.0 | 240.0 |
| Art Rivers | 76.0 % | 11.1 % | 5.4 % | 7.5 % | 567.0 | 83.0 | 40.0 | 56.0 |
| Ben Barnes | 83.1 % | | 9.2 % | 7.7 % | 1,728.0 | | 192.0 | 160.0 |
| Ben Hur | 83.1 % | | 9.2 % | 7.7 % | 1,728.0 | | 192.0 | 160.0 |
| Cailan Smith | 71.6 % | 13.2 % | 9.6 % | 5.6 % | 510.0 | 94.0 | 68.0 | 40.0 |

PEOPLE:

Utilization Dashboards



Utilization Dashboard

Multiple Companies - compared



Business Purpose

Provides an overview of utilization by month by company – and with comparison on the individual companies

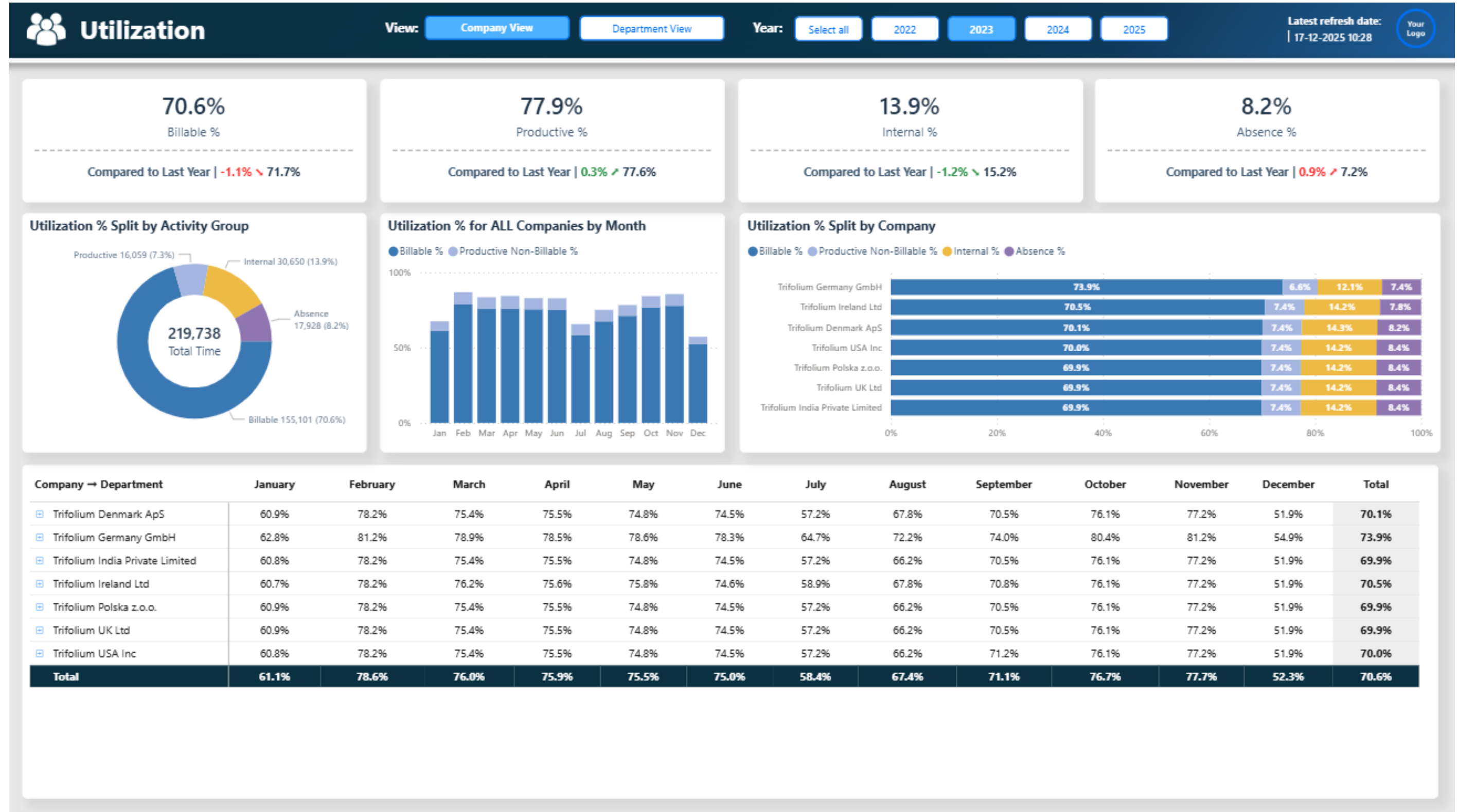
Target Role Management

Key KPI's

Billable Utilization
Productive Utilization

Capabilities

Drill to department level
Ability to switch between years



Utilization Dashboard

Company level to Department



Business Purpose

Provides an overview of utilization by month by department at company level and with comparison on the individual departments

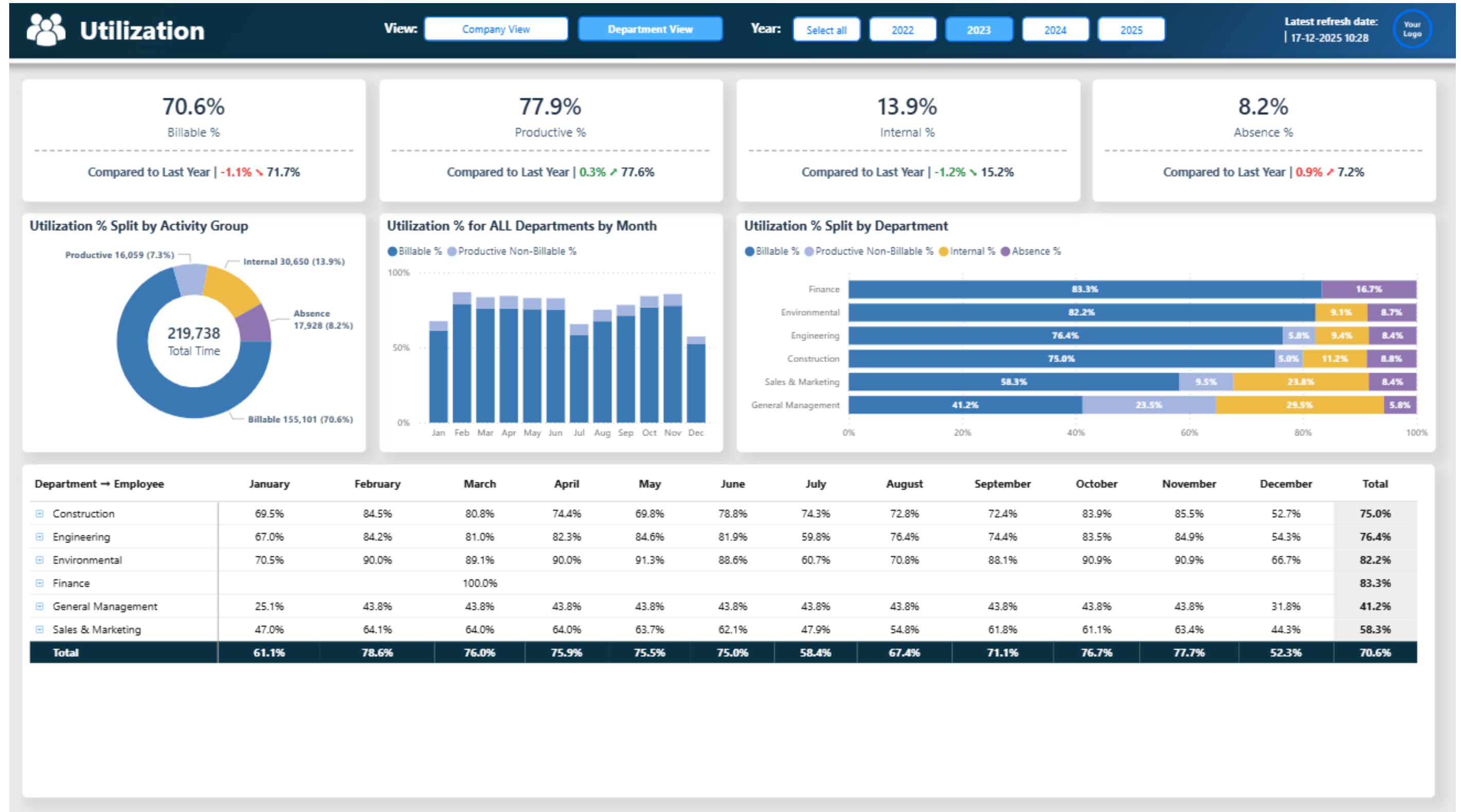
Target Role Management

Key KPI's

Billable Utilization
Productive Utilization

Capabilities

Ability to switch between different years and see numbers compared to last year
Ability to drill on Teams to the individual people



Utilization Dashboard

Department level



Business Purpose

Provides an overview of utilization by month for the department and focus on the individual Team members performance

Target Role

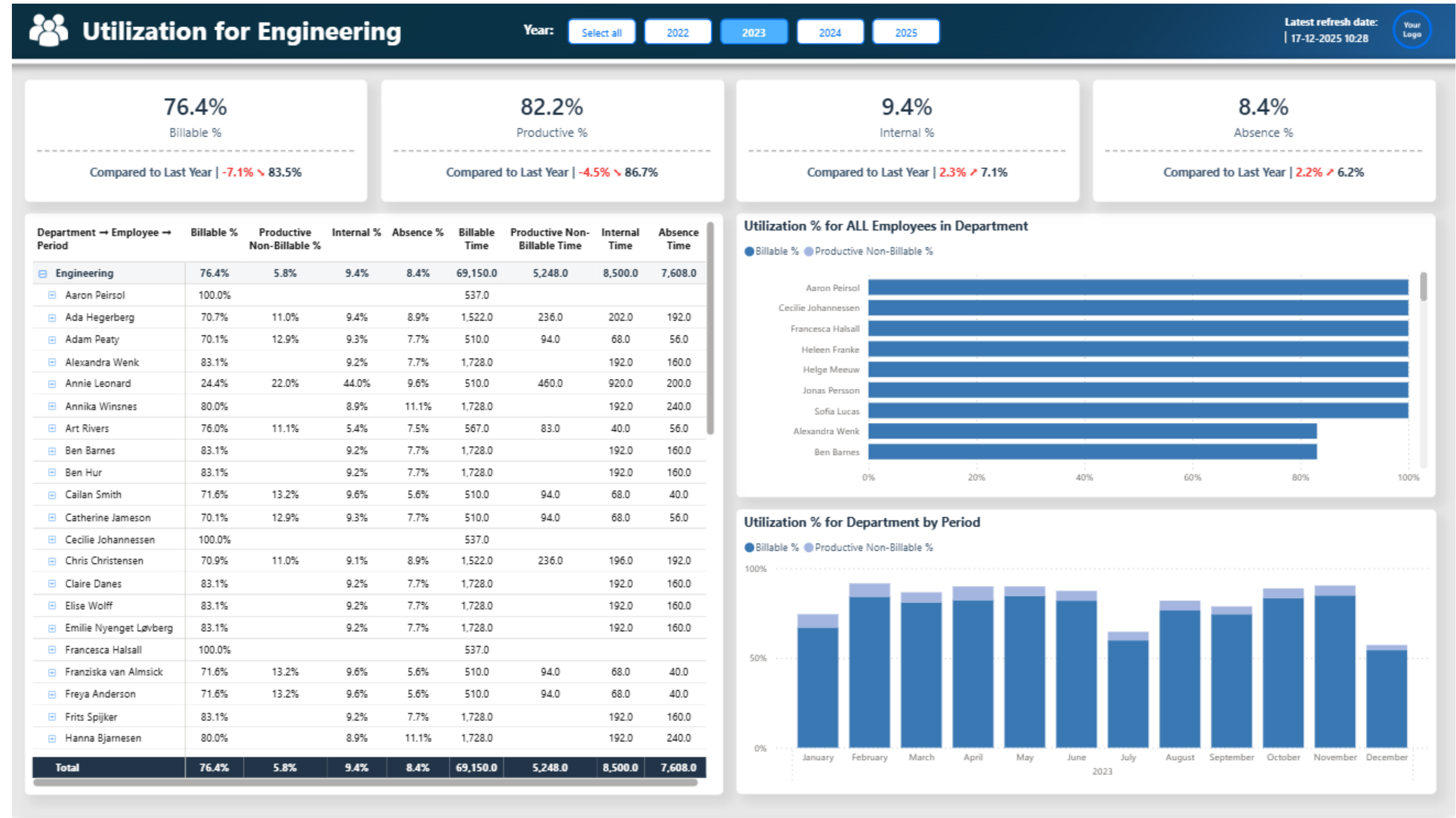
Department Managers

Key KPI's

Billable Utilization
Productive Utilization

Capabilities

Expansion on the individual team members to see projects behind the numbers
Comparison on individual team members in graphical overview



PEOPLE:

Capacity Graph Overview



Capacity Overview

Company level



Business Purpose

Based on resource planning data in People Planner it provides insight into capacity, vs booking month by month at company level

Target Role Management

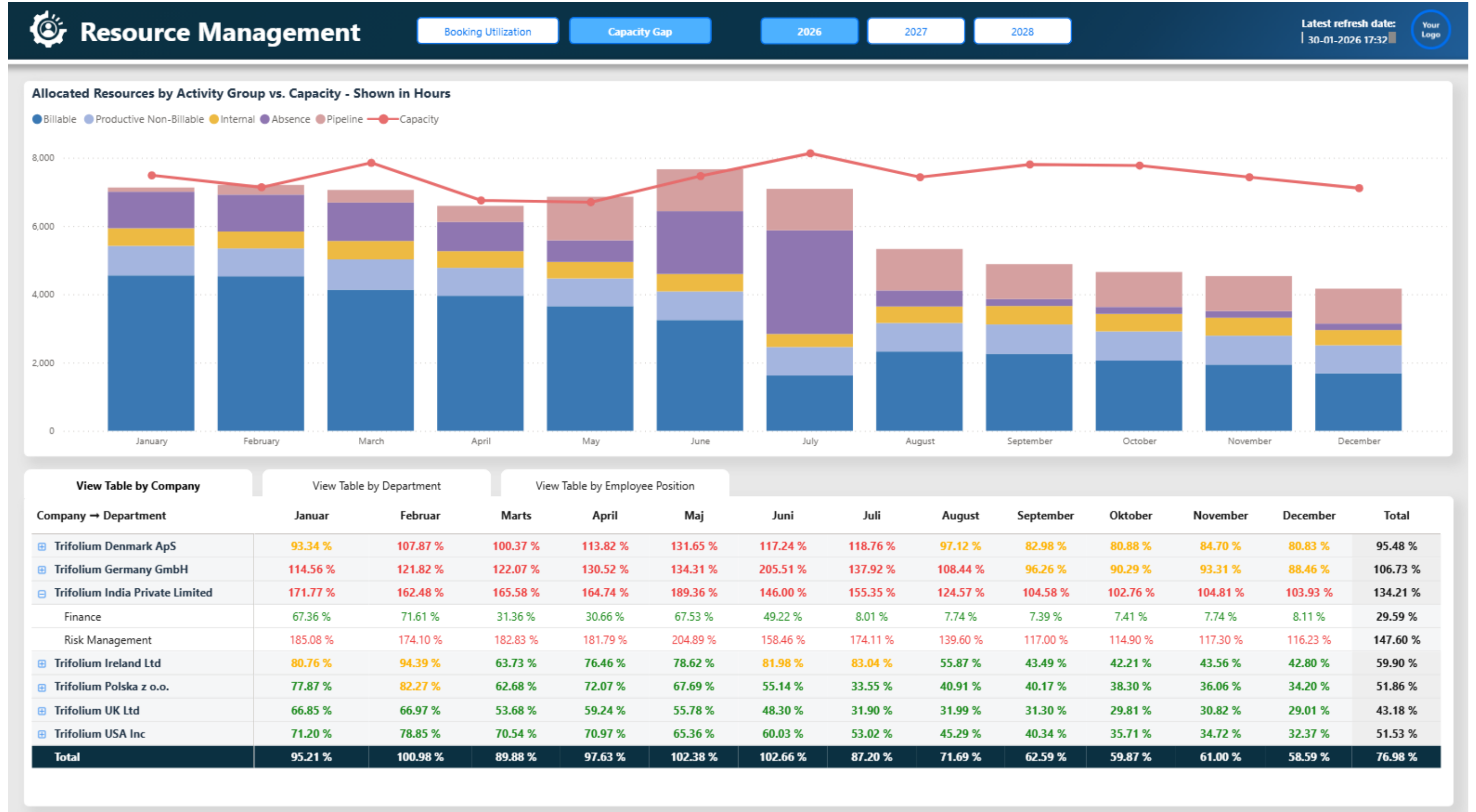
Key KPI's

Bookings by type
Available Capacity

Capabilities

Insight into overruns or available resources

Select a line in table and graph updates



Capacity Overview

Department level



Business Purpose

Based on resource planning data in People Planner it provides insight into capacity, vs booking month by month at department level

Target Role

Department Managers

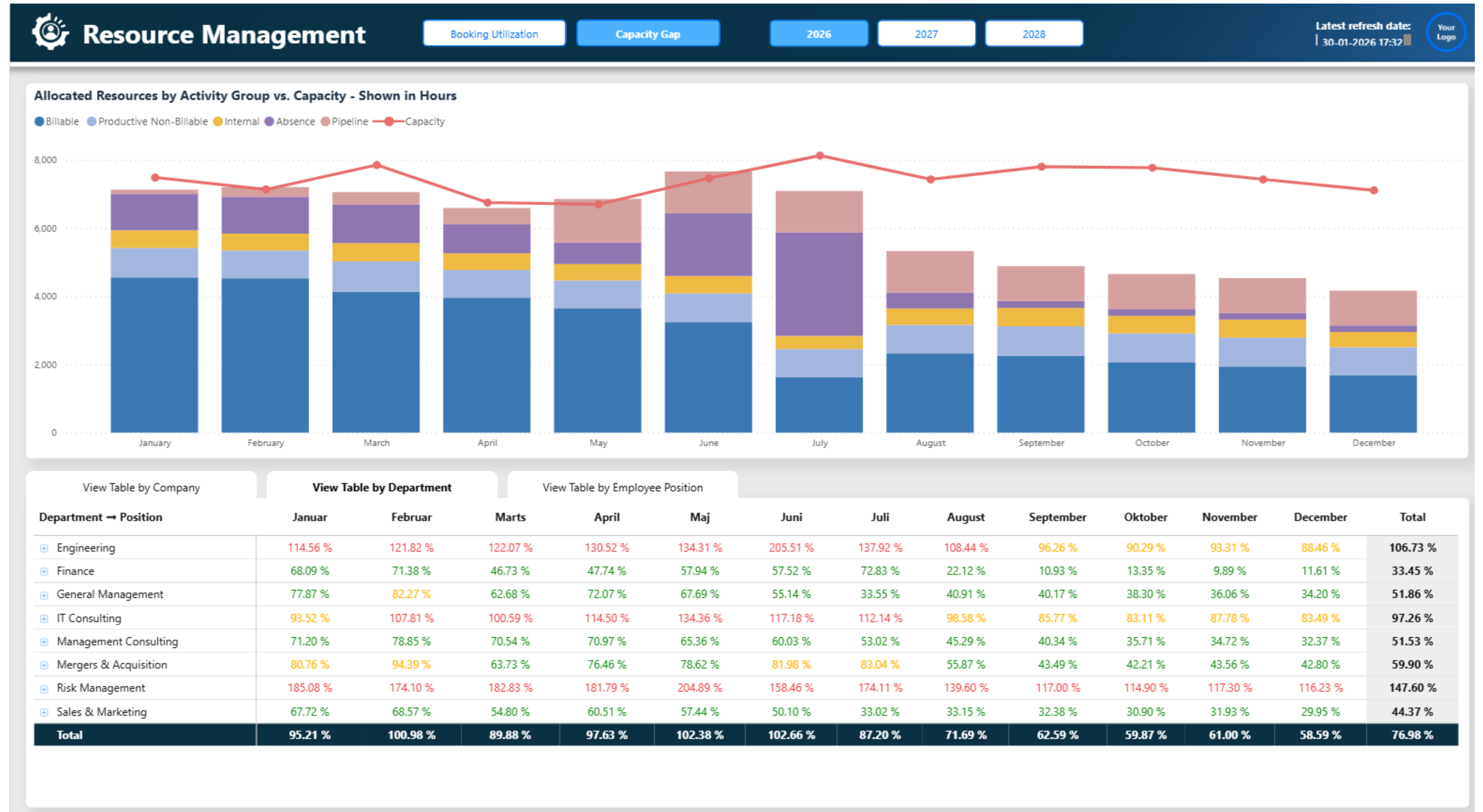
Key KPI's

Bookings by type
Available Capacity

Capabilities

Insight into overruns or available resources

Select a line in table and graph updates



Capacity Overview

By Employee Position



Business Purpose

Based on resource planning data in People Planner it provides insight into capacity, vs booking month by month – grouped by employee profile

Target Role

Management & Department Managers

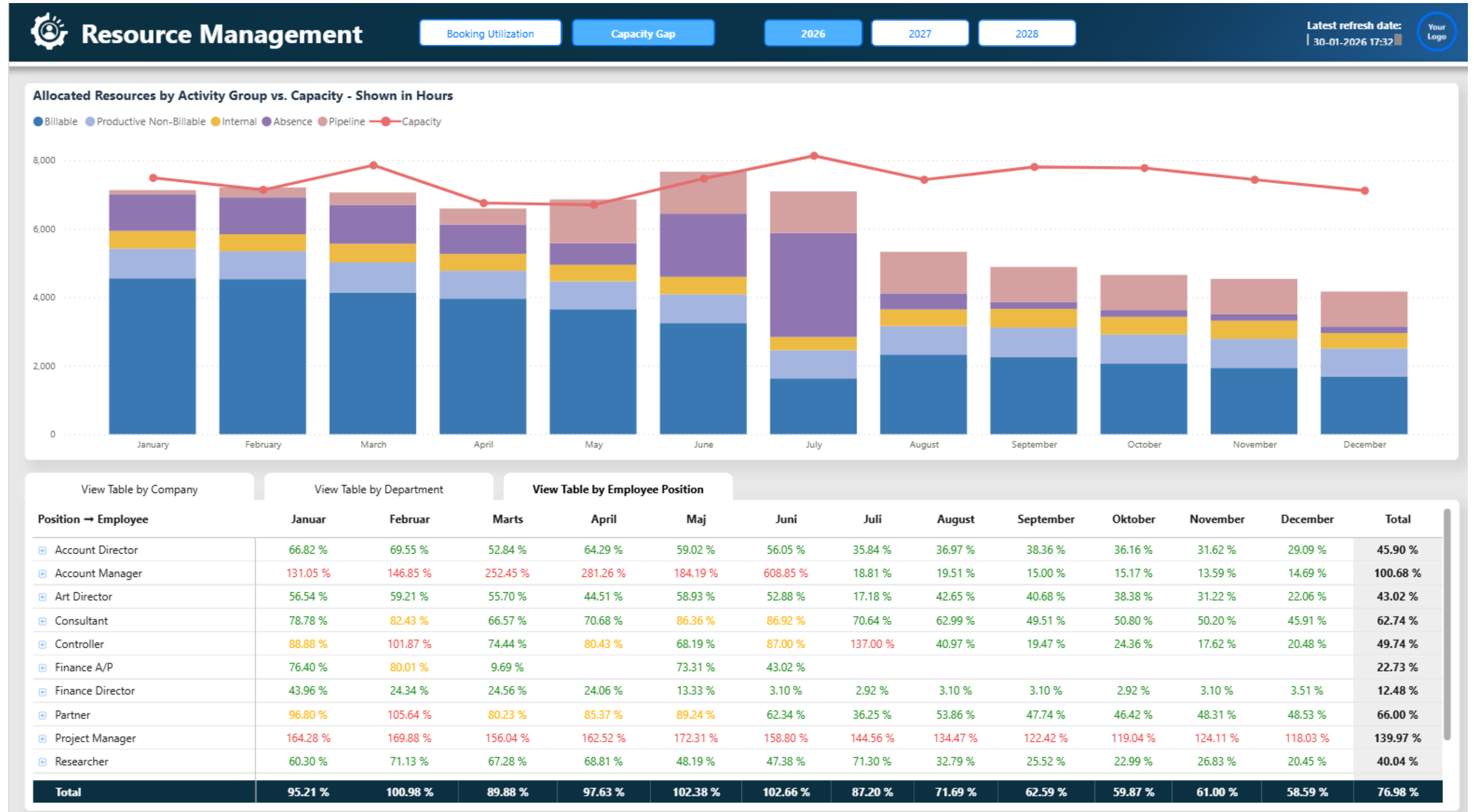
Key KPI's

Bookings by employee type
Available Capacity

Capabilities

Insight into overruns or available resources

Select a line in table and graph updates



Capacity Overview

Capacity GAP



Business Purpose

Based on resource planning data in People Planner it provides insight into capacity, vs booking month by employee profile

Target Role

Management & Department Managers

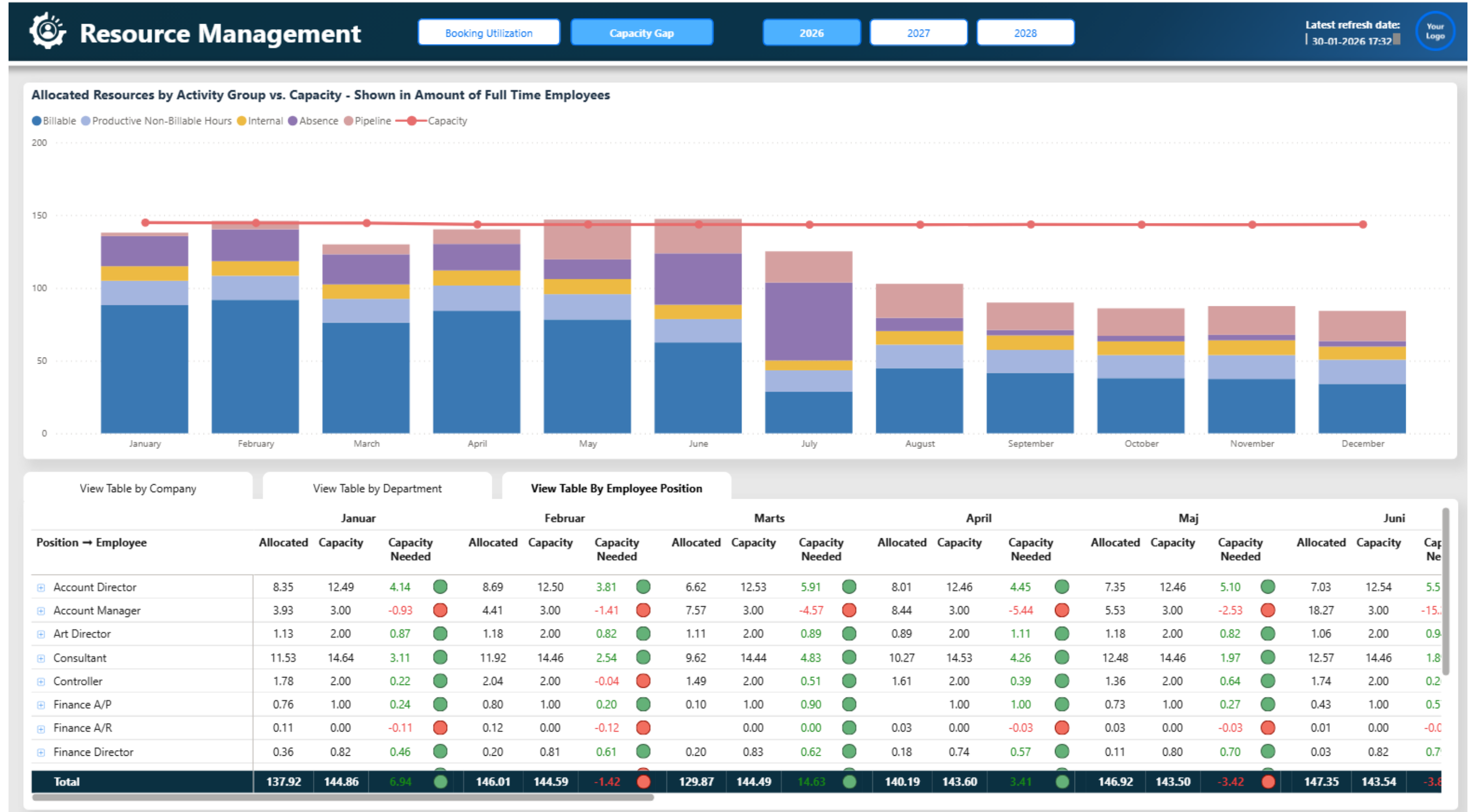
Key KPI's

Bookings by type
Available Capacity

Capabilities

Insight into capacity Gap compared to employee profile

Select a line in table and graph updates



PROJECTS

Project Portfolio Dashboard



Project Portfolio Overview

Company Level



Business Purpose

Provides an overview of project performance at corporate level with expansion from company to customer to project level

Target Role

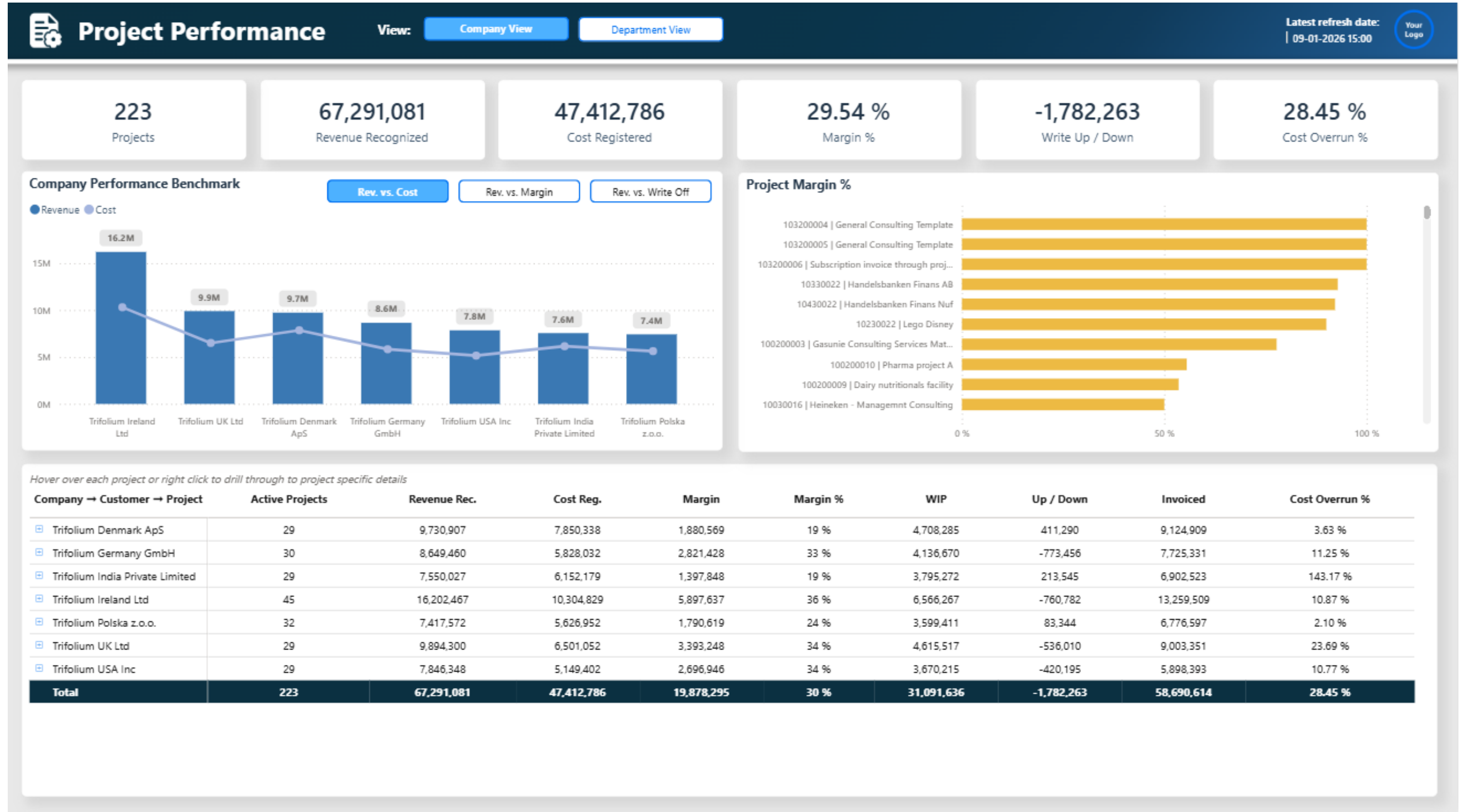
Management

Key KPI's

Project Revenue
Project Margin
Margin %
WIP
Write offs

Capabilities

Comparison by company on project performance
Follow top / worst performing projects by Margin %



Project Portfolio Overview



Department Level

Business Purpose

Provides an overview of project performance at department level with expansion from company to customer to project level

Target Role

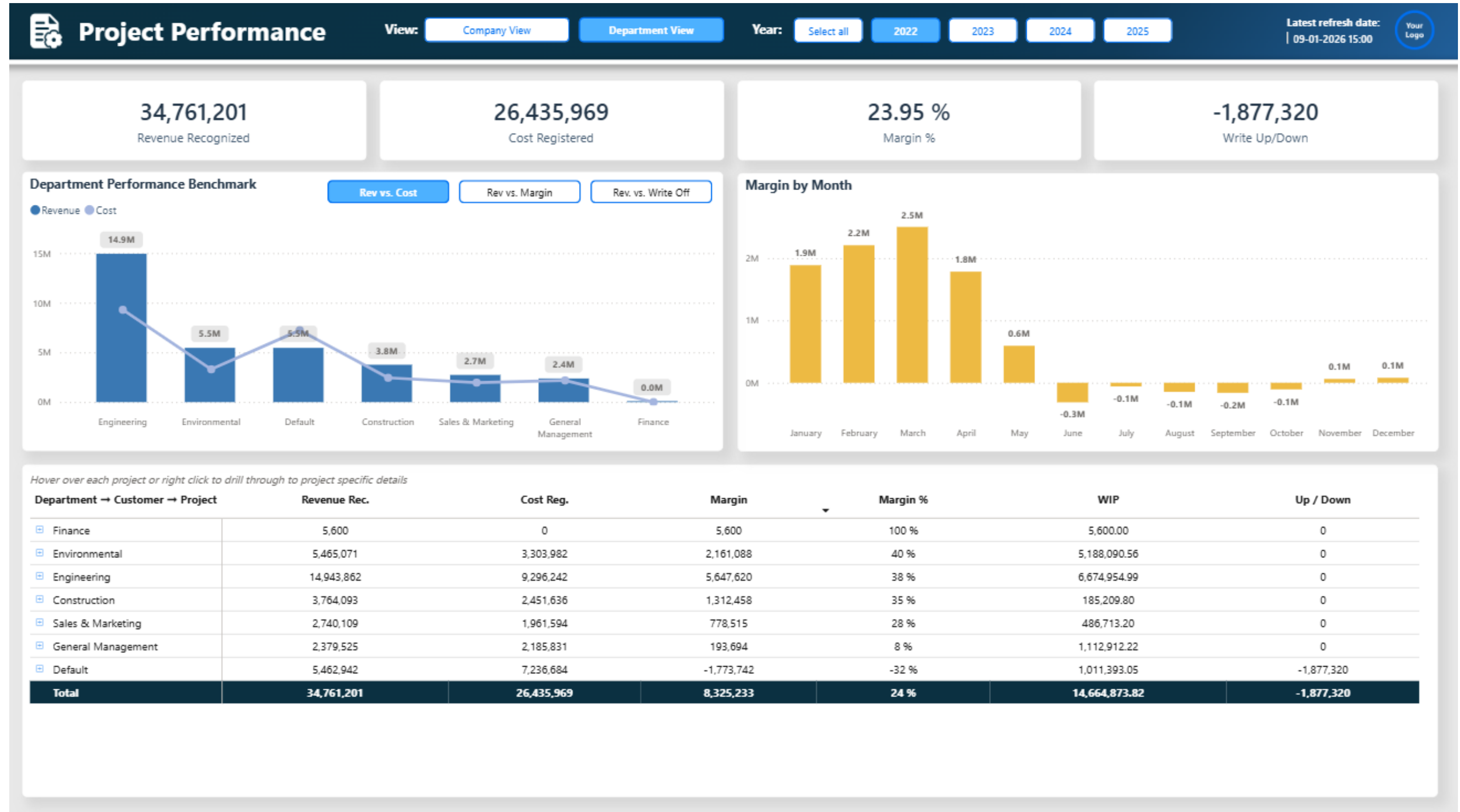
Management

Key KPI's

Project Revenue
Project Margin
Margin %
WIP
Write offs

Capabilities

Comparison by department on project performance
Follow development in project performance over time – by year – by month



Project Portfolio Overview

Project Manager Level – Financial Performance



Business Purpose

Project Portfolio overview in terms of financial project performance

Target Role

Project Managers

Key KPI's

Project Revenue
Project Margin
Margin %
WIP
Write offs

Capabilities

Overview of project performance for a given project manager with drill through to project details



Project Portfolio Overview

Project Manager Level – Project Progress



Business Purpose

Project Portfolio Overview with focus on the hours and costs on the projects the Project Manager manages

Target Role

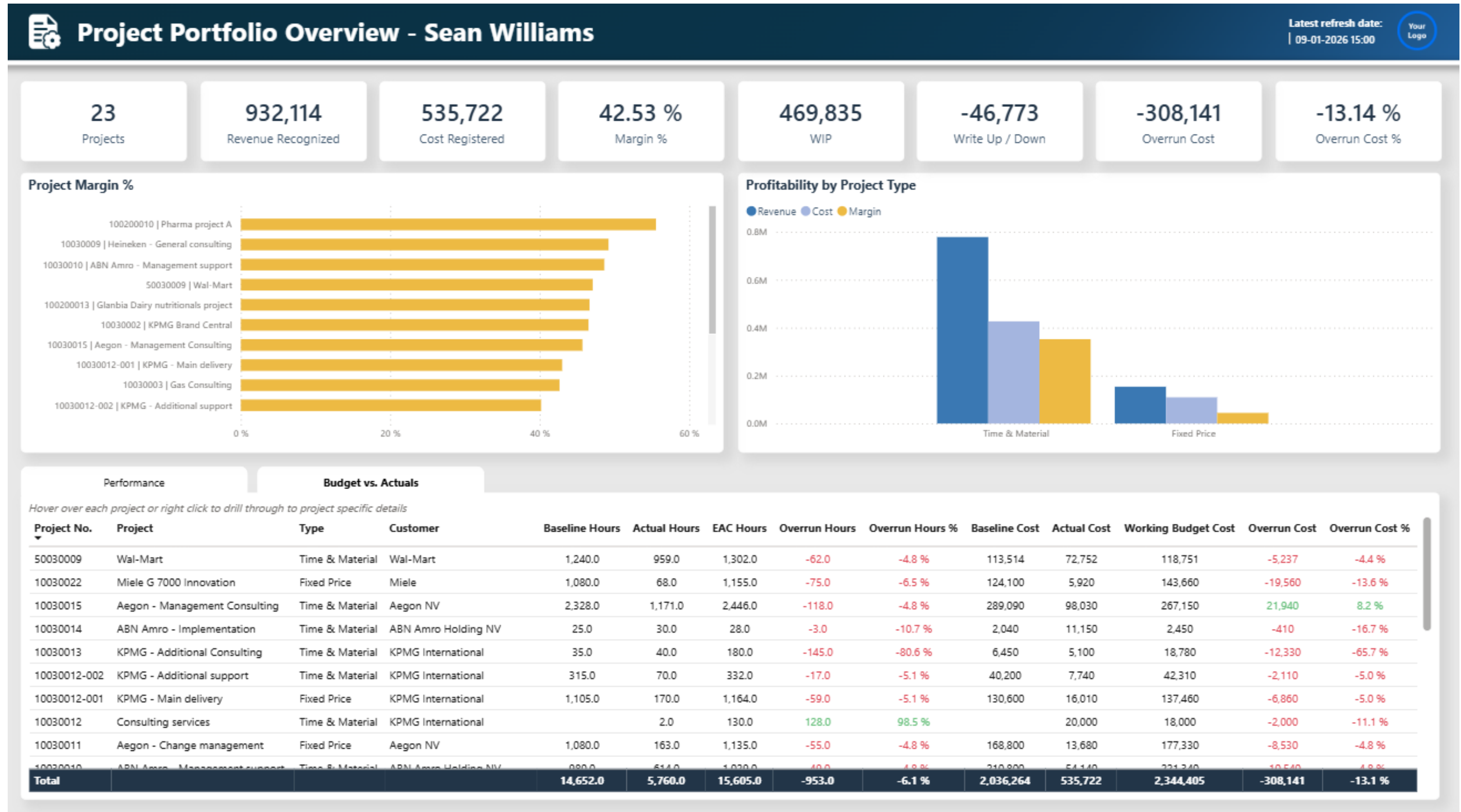
Project Managers

Key KPI's

Budget, Actual and EAC hours
Budget, Actual and EAC costs

Capabilities

Financial and hourly performance
Drill through to project-specific details



Project Portfolio Overview



Project Details

Business Purpose

Detailed project insights with project performance per task and employee

Target Role

Project Managers

Key KPI's

Revenue
Costs
Margin
Margin % per task and employee

Capabilities

Details per task / employee on a given project

Project: 10030009 | Heineken - General consulting

Latest refresh date:
09-01-2026 15:00



6

Employees

185,760

Revenue Recognized

94,360

Cost Registered

49.20 %

Margin %

37,880

WIP

0

Write Up / Down

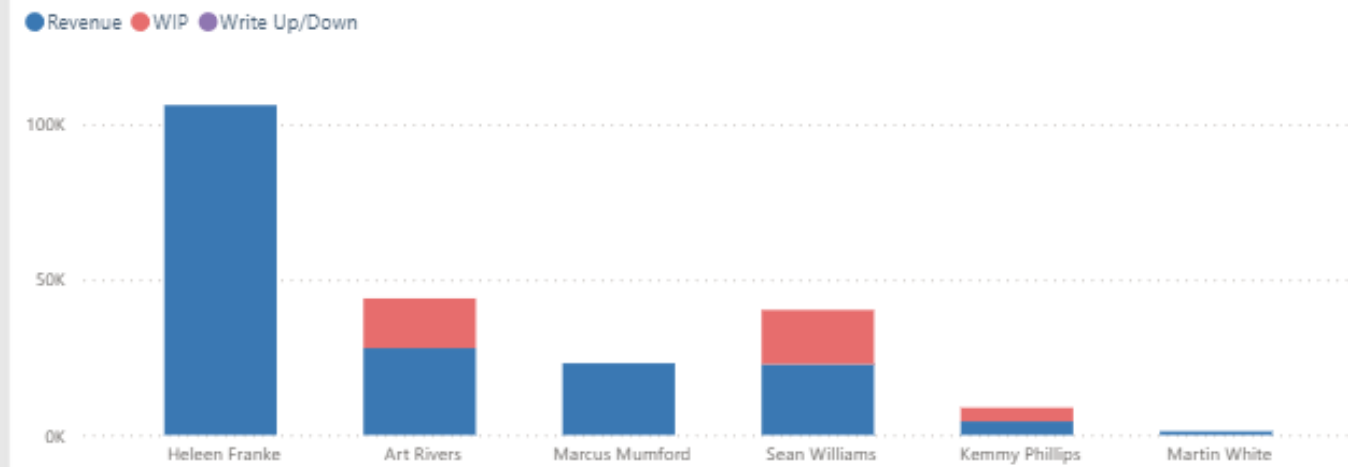
-12,054

Overrun Cost

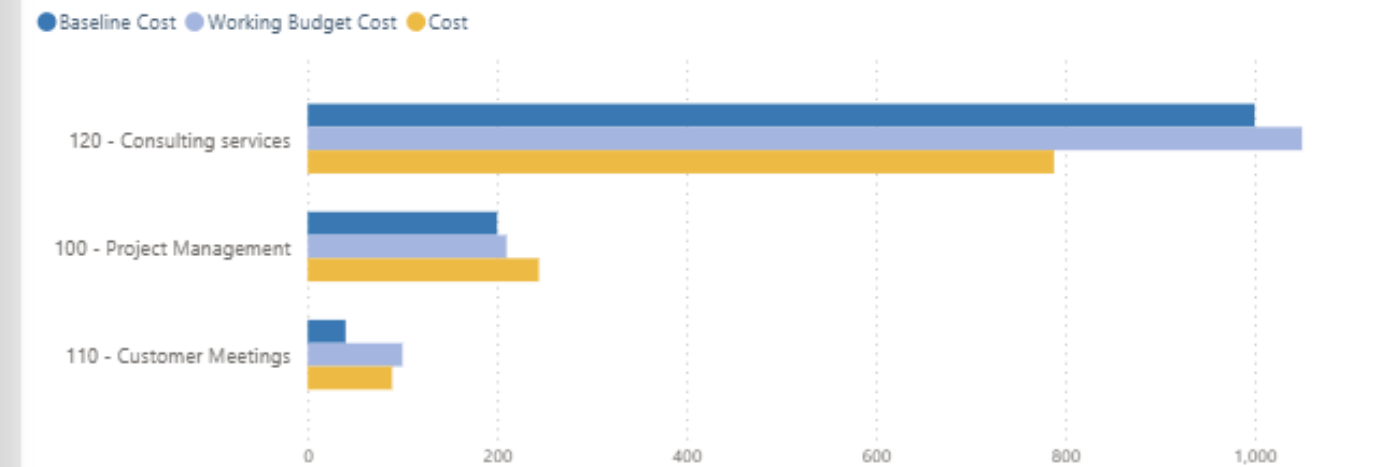
-8.52 %

Overrun Cost %

Employee Status



Project Overrun (Hours) by Task



Performance by Task & Employee

Budget vs. Actuals by Task

| Task | Baseline Hours | Actual Hours | EAC Hours | Overrun Hours | Overrun Hours % | Baseline Cost | Cost | Working Budget Cost | Overrun Cost | Overrun Cost % |
|---------------------------------|----------------|----------------|----------------|---------------|-----------------|----------------|---------------|---------------------|----------------|----------------|
| 100 - Project Management | 200.0 | 244.0 | 210.0 | -10.0 | -4.8 % | 18,000 | 23,040 | 19,620 | -1,620 | -8.3 % |
| 110 - Customer Meetings | 40.0 | 89.0 | 100.0 | -60.0 | -60.0 % | 3,600 | 7,480 | 8,346 | -4,746 | -56.9 % |
| 120 - Consulting services | 1,000.0 | 788.0 | 1,050.0 | -50.0 | -4.8 % | 80,000 | 63,840 | 84,798 | -4,798 | -5.7 % |
| 500 - Software | | | | | | 10,000 | | 10,000 | 0 | 0.0 % |
| 530 - Travel airfare- taxi etc. | | | | | | 15,000 | | 15,750 | -750 | -4.8 % |
| 540 - Hotel | | | | | | 1,800 | | 1,890 | -90 | -4.8 % |
| 550 - Meals | | | | | | 1,000 | | 1,050 | -50 | -4.8 % |
| Total | 1,240.0 | 1,121.0 | 1,360.0 | -120.0 | -8.8 % | 129,400 | 94,360 | 141,454 | -12,054 | -8.5 % |

CUSTOMERS:

Customer 360 Overview



Customer 360 Overview

Corporate customer performance overview



Business Purpose

Provides insight into the customers performance & financial status across the business

Target Role

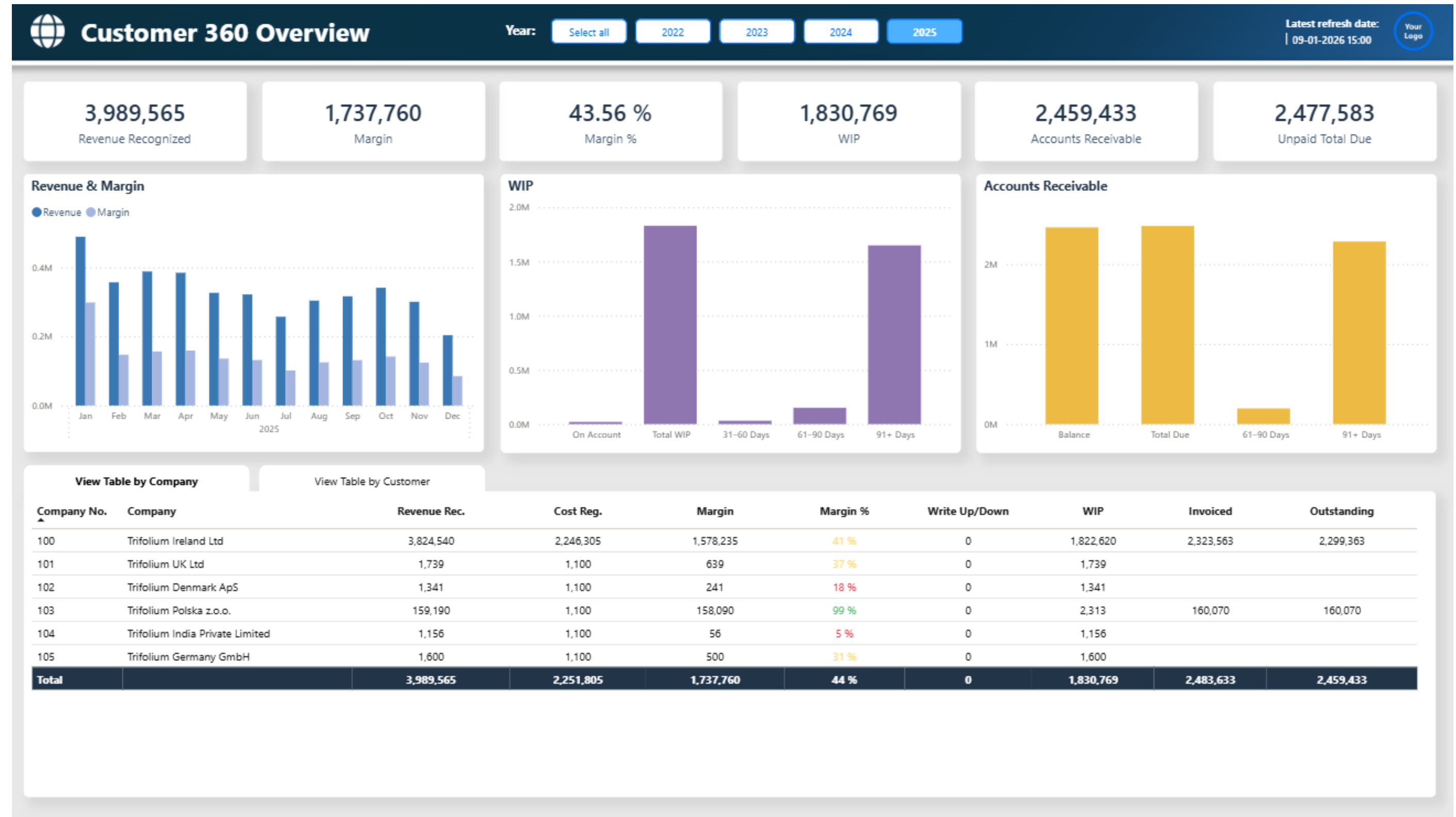
Management

Key KPI's

Revenue
Margin
Margin %
WIP
Accounts Receivable
Total Due

Capabilities

Provides an overview of how the customers are performing financially with drill to the individual projects for the selected customer



Customer 360 Overview

Per Customer View



Business Purpose

Provides insight into the customers performance & financial status across the business for a specific role

Target Role

Account Managers

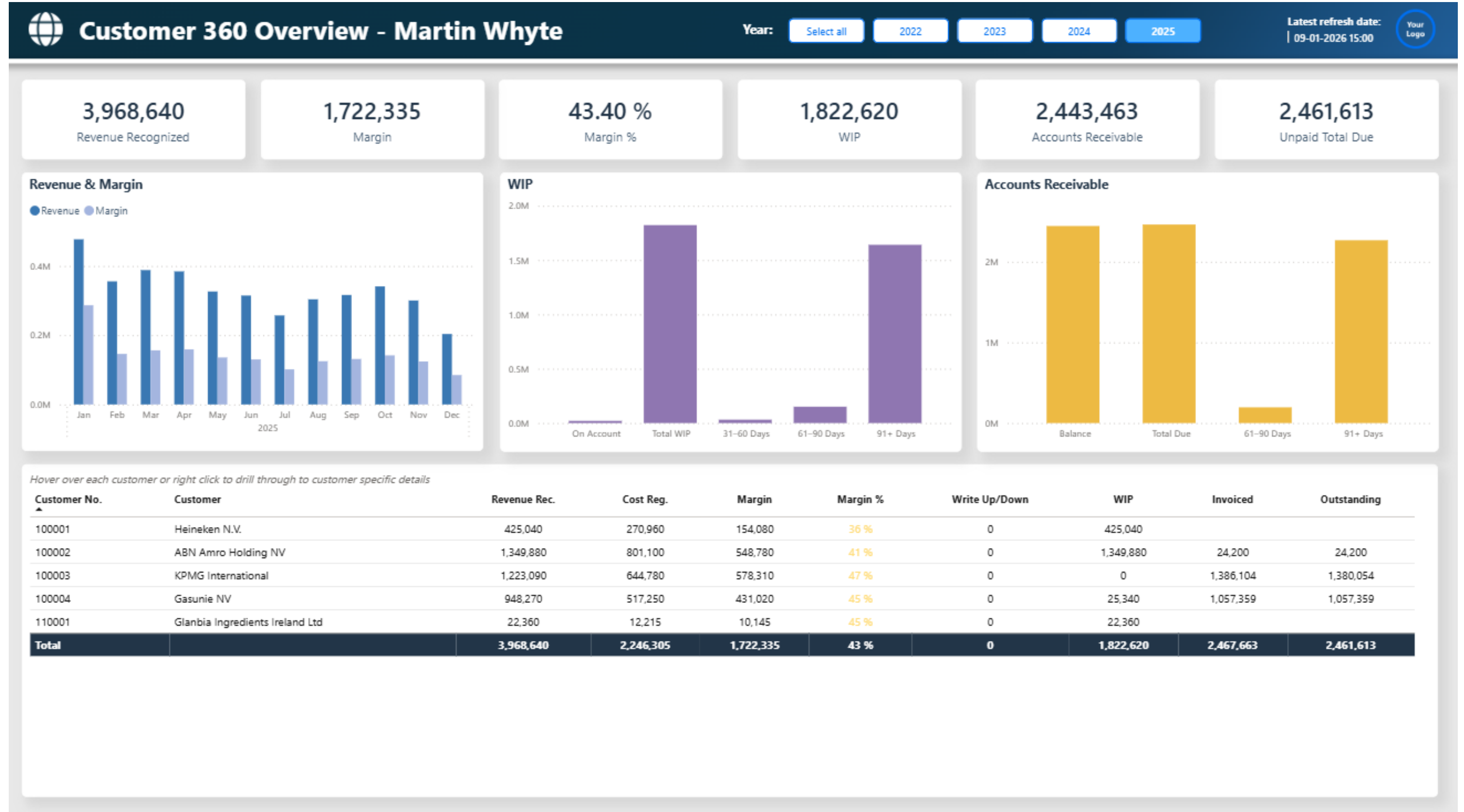
Key KPI's

Revenue
Margin
Margin %
WIP

Accounts Receivable
Total Due

Capabilities

Provides an overview of how the customers are performing financially with drill to the individual projects for the selected customer



Customer 360 Overview

Per Customer View



Business Purpose

Insight to the individual customer and the projects they deliver

Target Role

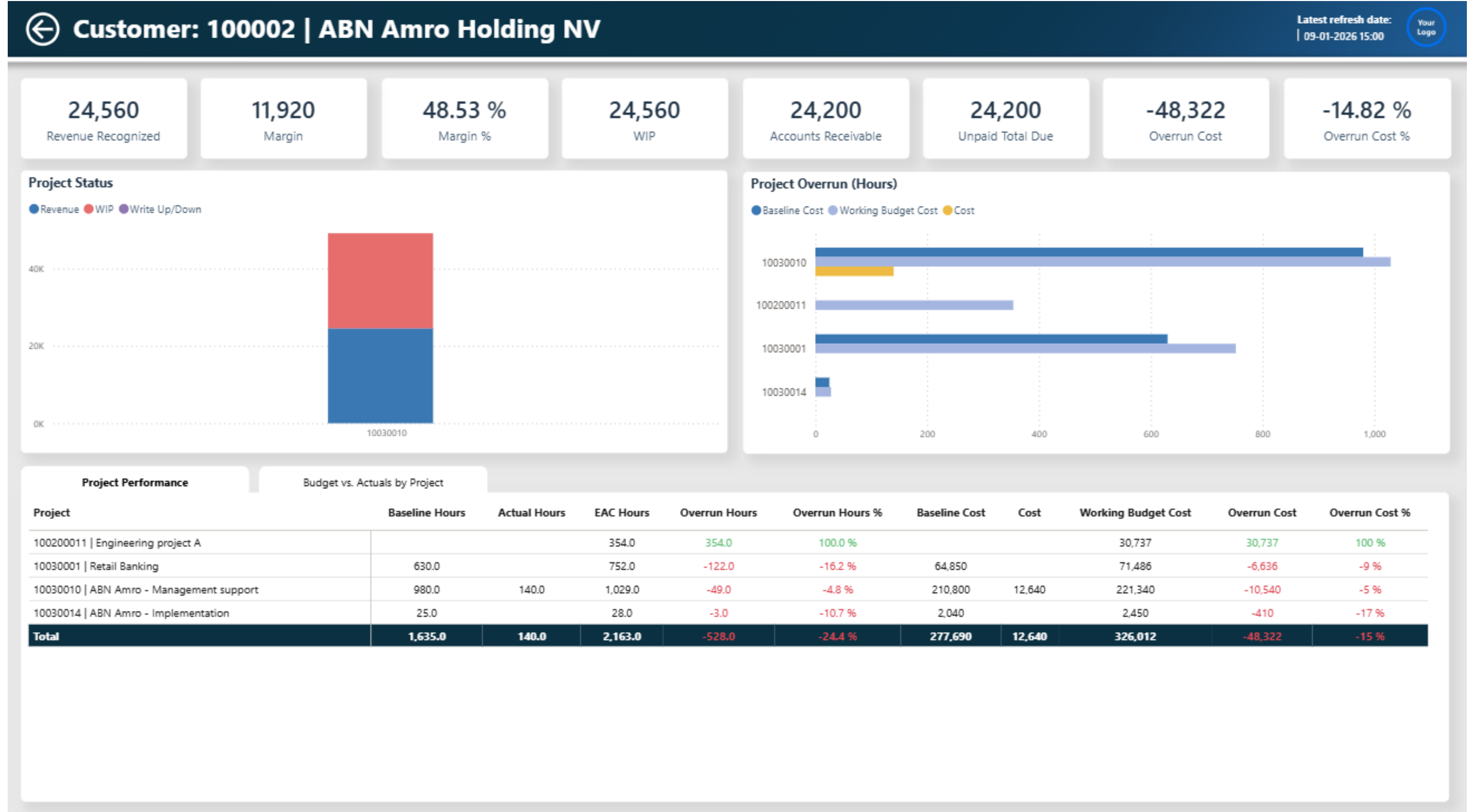
Account Managers

Key KPI's

Revenue
Margin
Margin %
WIP
Accounts Receivable
Total Due
Overruns

Capabilities

Full transparency of project performance for a selected customer



FINANCE:

Income Statement



Profit & Loss Statement

By Period



Business Purpose

High level insight into company performance from a P&L point of view by period

Target Role

Management
Finance

Key KPI's

Revenue
Gross Profit
EBITDA
Net Income

Capabilities

Show P&L in Base and Enterprise Currency
Show P&L compared to Last Year and Budget
Show P&L by Year, Quarter, or Month

***The P&L and KPI's will need to be adjusted to your account structure and the way you summarize it*

| Profit & Loss Statement | | ▲ If base currency, filter for specific company to show currency | | | | Latest refresh date: 09-01-2026 15:00 | |
|---|-------------|--|-------------|-------------|---------------|---------------------------------------|--|
| <input type="button" value="Show P&L by Period"/> <input type="button" value="Show P&L by Company"/> <input type="button" value="Base Currency"/> <input type="button" value="Enterprise Currency"/> <input type="button" value="Actual"/> <input type="button" value="Actual vs. Last Year"/> <input type="button" value="Actual vs. Budget"/> <input type="button" value="Year"/> <input type="button" value="Quarter"/> <input type="button" value="Month"/> | | | | | | | |
| Amounts (in thousands) | 2022 | 2023 | 2024 | 2025 | Total | | |
| Revenue | 309,237 EUR | 340,093 EUR | 313,024 EUR | 313,025 EUR | 1,275,379 EUR | | |
| Variable Costs | -98,978 EUR | -107,401 EUR | -97,393 EUR | -97,394 EUR | -401,166 EUR | | |
| Subcontractor Costs | -289 EUR | -319 EUR | -297 EUR | -297 EUR | -1,202 EUR | | |
| Direct Project Costs | -73,390 EUR | -79,957 EUR | -74,440 EUR | -74,440 EUR | -302,227 EUR | | |
| Cost of Hours | -25,299 EUR | -27,125 EUR | -22,656 EUR | -22,657 EUR | -97,738 EUR | | |
| Gross Profit | 119,210 EUR | 131,264 EUR | 118,599 EUR | 118,600 EUR | 487,673 EUR | | |
| Fixed Costs | -91,049 EUR | -101,428 EUR | -97,031 EUR | -97,031 EUR | -386,540 EUR | | |
| Staff Salaries | -56,583 EUR | -63,298 EUR | -61,528 EUR | -61,528 EUR | -242,936 EUR | | |
| Other employee costs | -5,353 EUR | -5,912 EUR | -5,504 EUR | -5,504 EUR | -22,273 EUR | | |
| Travel and Entertainment | -20,369 EUR | -22,494 EUR | -20,942 EUR | -20,942 EUR | -84,747 EUR | | |
| Marketing and Advertising | -1,071 EUR | -1,197 EUR | -1,116 EUR | -1,116 EUR | -4,500 EUR | | |
| Professional Fees | -1,007 EUR | -1,127 EUR | -1,050 EUR | -1,050 EUR | -4,235 EUR | | |
| Facilities | -1,135 EUR | -1,291 EUR | -1,205 EUR | -1,205 EUR | -4,836 EUR | | |
| Office supplies & IT costs | -2,346 EUR | -2,591 EUR | -2,412 EUR | -2,412 EUR | -9,762 EUR | | |
| Company Car | -3,184 EUR | -3,518 EUR | -3,275 EUR | -3,275 EUR | -13,251 EUR | | |
| EBITDA | 119,210 EUR | 131,264 EUR | 118,599 EUR | 118,600 EUR | 487,673 EUR | | |
| Depreciation and taxes | -967 EUR | -1,068 EUR | -994 EUR | -994 EUR | -4,023 EUR | | |
| Depreciation | -702 EUR | -776 EUR | -722 EUR | -722 EUR | -2,922 EUR | | |
| Interests | 113 EUR | 125 EUR | 117 EUR | 117 EUR | 472 EUR | | |
| Tax | -378 EUR | -417 EUR | -388 EUR | -388 EUR | -1,572 EUR | | |
| Net Profit | 118,243 EUR | 130,196 EUR | 117,605 EUR | 117,605 EUR | 483,650 EUR | | |

Profit & Loss Statement

By Period – Compared to Last Year



Business Purpose

High level insight into company performance from a P&L point of view by period

Target Role

Management
Finance

Key KPI's

Revenue
Gross Profit
EBITDA
Net Income

Capabilities

Show P&L in Base and Enterprise Currency
Show P&L compared to Last Year and Budget
Show P&L by Year, Quarter, or Month

***The P&L and KPI's will need to be adjusted to your account structure and the way you summarize it*

| Profit & Loss Statement | | ▲ If base currency, filter for specific company to show currency | | | | | | | | | | | | | | | | | | Latest refresh date: 09-01-2026 15:00 | | | | | |
|----------------------------|------------------------|--|----------|----------|---------------|----------|----------|---------------------|----------|----------|-----------|----------|----------|----------------------|----------|----------|-------------------|----------|--|---------------------------------------|--|---------|--|-------|--|
| Show P&L by Period | | Show P&L by Company | | | Base Currency | | | Enterprise Currency | | | Actual | | | Actual vs. Last Year | | | Actual vs. Budget | | | Year | | Quarter | | Month | |
| Month | Amounts (in thousands) | Jan 2023 | | | Feb 2023 | | | Mar 2023 | | | Apr 2023 | | | May 2023 | | | Jun | | | | | | | | |
| | | Last Year | Actual | %-Change | Last Year | Actual | %-Change | Last Year | Actual | %-Change | Last Year | Actual | %-Change | Last Year | Actual | %-Change | Last Year | Actual | | | | | | | |
| Revenue | | 513,547 | 589,178 | 15% | 665,971 | 728,276 | 9% | 407,387 | 458,278 | 12% | 443,101 | 488,762 | 10% | 416,617 | 468,729 | 13% | 392,597 | 626,000 | | | | | | | |
| Variable Costs | | -164,243 | -188,106 | -15% | -210,716 | -230,448 | -9% | -130,579 | -146,831 | -12% | -142,032 | -155,766 | -10% | -135,002 | -149,545 | -11% | -128,506 | -198,000 | | | | | | | |
| Subcontractor Costs | | -474 | -553 | -17% | -617 | -684 | -11% | -370 | -428 | -16% | -407 | -458 | -12% | -387 | -439 | -13% | -368 | - | | | | | | | |
| Direct Project Costs | | -121,431 | -138,671 | -14% | -157,162 | -171,478 | -9% | -95,176 | -107,310 | -13% | -104,337 | -114,770 | -10% | -99,231 | -110,034 | -11% | -94,381 | -147,000 | | | | | | | |
| Cost of Hours | | -42,338 | -48,883 | -15% | -52,937 | -58,287 | -10% | -35,032 | -39,093 | -12% | -37,288 | -40,539 | -9% | -35,383 | -39,072 | -10% | -33,758 | -50,000 | | | | | | | |
| Gross Profit | | 200,378 | 226,675 | 13% | 259,450 | 280,228 | 8% | 162,575 | 178,003 | 9% | 174,251 | 188,659 | 8% | 161,098 | 181,438 | 13% | 149,720 | 240,000 | | | | | | | |
| Fixed Costs | | -148,925 | -174,397 | -17% | -195,805 | -217,599 | -11% | -114,233 | -133,444 | -17% | -126,818 | -144,336 | -14% | -120,517 | -137,746 | -14% | -114,370 | -187,000 | | | | | | | |
| Staff Salaries | | -92,264 | -107,936 | -17% | -122,045 | -135,633 | -11% | -69,957 | -82,260 | -18% | -78,202 | -89,252 | -14% | -74,333 | -85,365 | -15% | -70,496 | -116,000 | | | | | | | |
| Other employee costs | | -8,798 | -10,250 | -17% | -11,437 | -12,675 | -11% | -6,863 | -7,932 | -16% | -7,550 | -8,484 | -12% | -7,173 | -8,135 | -13% | -6,815 | -10,000 | | | | | | | |
| Travel and Entertainment | | -33,482 | -39,009 | -17% | -43,527 | -48,238 | -11% | -26,117 | -30,187 | -16% | -28,729 | -32,286 | -12% | -27,293 | -30,955 | -13% | -25,929 | -41,000 | | | | | | | |
| Marketing and Advertising | | -1,760 | -2,498 | -42% | -2,287 | -2,535 | -11% | -1,373 | -1,586 | -16% | -1,510 | -1,697 | -12% | -1,435 | -1,627 | -13% | -1,363 | -2,000 | | | | | | | |
| Professional Fees | | -1,656 | -1,929 | -17% | -2,153 | -2,720 | -26% | -1,292 | -1,493 | -16% | -1,421 | -1,597 | -12% | -1,350 | -1,531 | -13% | -1,282 | -2,000 | | | | | | | |
| Facilities | | -1,865 | -2,173 | -17% | -2,500 | -2,687 | -7% | -1,495 | -1,781 | -19% | -1,600 | -2,247 | -40% | -1,521 | -1,724 | -13% | -1,445 | -2,000 | | | | | | | |
| Office supplies & IT costs | | -3,855 | -4,492 | -17% | -5,017 | -5,555 | -11% | -3,027 | -3,476 | -15% | -3,309 | -3,718 | -12% | -3,144 | -3,565 | -13% | -2,987 | -4,000 | | | | | | | |
| Company Car | | -5,245 | -6,111 | -16% | -6,838 | -7,556 | -11% | -4,110 | -4,728 | -15% | -4,497 | -5,055 | -12% | -4,269 | -4,844 | -13% | -4,053 | -6,000 | | | | | | | |
| EBITDA | | 200,378 | 226,675 | 13% | 259,450 | 280,228 | 8% | 162,575 | 178,003 | 9% | 174,251 | 188,659 | 8% | 161,098 | 181,438 | 13% | 149,720 | 240,000 | | | | | | | |
| Depreciation and taxes | | -1,589 | -1,851 | -17% | -2,065 | -2,289 | -11% | -1,239 | -1,432 | -16% | -1,364 | -1,532 | -12% | -1,296 | -1,469 | -13% | -1,231 | -1,500 | | | | | | | |
| Depreciation | | -1,154 | -1,345 | -17% | -1,500 | -1,663 | -11% | -900 | -1,041 | -16% | -991 | -1,113 | -12% | -941 | -1,067 | -13% | -894 | -1,000 | | | | | | | |
| Interests | | 186 | 217 | -16% | 242 | 268 | -11% | 145 | 168 | -16% | 160 | 180 | -12% | 152 | 172 | -13% | 144 | - | | | | | | | |
| Tax | | -621 | -724 | -17% | -807 | -895 | -11% | -484 | -560 | -16% | -533 | -599 | -12% | -506 | -574 | -13% | -481 | - | | | | | | | |
| Net Profit | | 198,789 | 224,824 | 13% | 257,385 | 277,939 | 8% | 161,336 | 176,571 | 9% | 172,887 | 187,127 | 8% | 159,802 | 179,969 | 13% | 148,489 | 238,000 | | | | | | | |

Profit & Loss Statement

By Company



Business Purpose

High level insight into company performance from a P&L point of view by period

Target Role

Management
Finance

Key KPI's

Revenue
Gross Profit
EBITDA
Net Income

Capabilities

Show P&L in Base and Enterprise Currency
Show P&L compared to Last Year and Budget
***The P&L and KPI's will need to be adjusted to your account structure and the way you summarize it*

| Profit & Loss Statement | | | | | | Latest refresh date: 09-01-2026 15:00 | | | | | | | | | | | | | | | |
|----------------------------|-----------------------|------------------------|-----------------------|-------------------------|-------------------|---------------------------------------|--|--------|--|----------------------|--|-------------------|--|------|--|------|--|------|--|------|--|
| Show P&L by Period | | Show P&L by Company | | Base Currency | | Enterprise Currency | | Actual | | Actual vs. Last Year | | Actual vs. Budget | | 2022 | | 2023 | | 2024 | | 2025 | |
| Amounts (in thousands) | Trifolium Denmark ApS | Trifolium Germany GmbH | Trifolium Ireland Ltd | Trifolium Polska z.o.o. | Trifolium USA Inc | | | | | | | | | | | | | | | | |
| Revenue | 3,164,895 DKK | 340,093 EUR | 372,186 EUR | 3,357,365 PLN | 315,917 USD | | | | | | | | | | | | | | | | |
| Variable Costs | -1,005,680 DKK | -107,401 EUR | -117,508 EUR | -1,064,774 PLN | -100,050 USD | | | | | | | | | | | | | | | | |
| Subcontractor Costs | -2,977 DKK | -319 EUR | -350 EUR | -3,158 PLN | -296 USD | | | | | | | | | | | | | | | | |
| Direct Project Costs | -746,142 DKK | -79,957 EUR | -87,597 EUR | -791,263 PLN | -74,208 USD | | | | | | | | | | | | | | | | |
| Cost of Hours | -256,561 DKK | -27,125 EUR | -29,561 EUR | -270,352 PLN | -25,546 USD | | | | | | | | | | | | | | | | |
| Gross Profit | 1,216,064 DKK | 131,264 EUR | 143,408 EUR | 1,290,723 PLN | 122,079 USD | | | | | | | | | | | | | | | | |
| Fixed Costs | -943,150 DKK | -101,428 EUR | -111,270 EUR | -1,001,868 PLN | -93,788 USD | | | | | | | | | | | | | | | | |
| Staff Salaries | -587,248 DKK | -63,298 EUR | -69,504 EUR | -624,487 PLN | -58,382 USD | | | | | | | | | | | | | | | | |
| Other employee costs | -55,167 DKK | -5,912 EUR | -6,478 EUR | -58,505 PLN | -5,487 USD | | | | | | | | | | | | | | | | |
| Travel and Entertainment | -209,909 DKK | -22,494 EUR | -24,644 EUR | -222,605 PLN | -20,876 USD | | | | | | | | | | | | | | | | |
| Marketing and Advertising | -11,235 DKK | -1,197 EUR | -1,311 EUR | -11,903 PLN | -1,116 USD | | | | | | | | | | | | | | | | |
| Professional Fees | -10,526 DKK | -1,127 EUR | -1,233 EUR | -11,154 PLN | -1,050 USD | | | | | | | | | | | | | | | | |
| Facilities | -12,064 DKK | -1,291 EUR | -1,411 EUR | -12,771 PLN | -1,208 USD | | | | | | | | | | | | | | | | |
| Office supplies & IT costs | -24,179 DKK | -2,591 EUR | -2,839 EUR | -25,643 PLN | -2,405 USD | | | | | | | | | | | | | | | | |
| Company Car | -32,822 DKK | -3,518 EUR | -3,849 EUR | -34,800 PLN | -3,264 USD | | | | | | | | | | | | | | | | |
| EBITDA | 1,216,064 DKK | 131,264 EUR | 143,408 EUR | 1,290,723 PLN | 122,079 USD | | | | | | | | | | | | | | | | |
| Depreciation and taxes | -9,964 DKK | -1,068 EUR | -1,354 EUR | -10,567 PLN | -991 USD | | | | | | | | | | | | | | | | |
| Depreciation | -7,239 DKK | -776 EUR | -850 EUR | -7,677 PLN | -720 USD | | | | | | | | | | | | | | | | |
| Interests | 1,168 DKK | 125 EUR | -46 EUR | 1,239 PLN | 116 USD | | | | | | | | | | | | | | | | |
| Tax | -3,894 DKK | -417 EUR | -457 EUR | -4,129 PLN | -387 USD | | | | | | | | | | | | | | | | |
| Net Profit | 1,206,100 DKK | 130,196 EUR | 142,054 EUR | 1,280,156 PLN | 121,088 USD | | | | | | | | | | | | | | | | |

FINANCE:

Working Capital Dashboard



Working Capital

Company Overview



Business Purpose

Provide a corporate overview of working capital in terms of AR, AP & WIP By company

Target Role

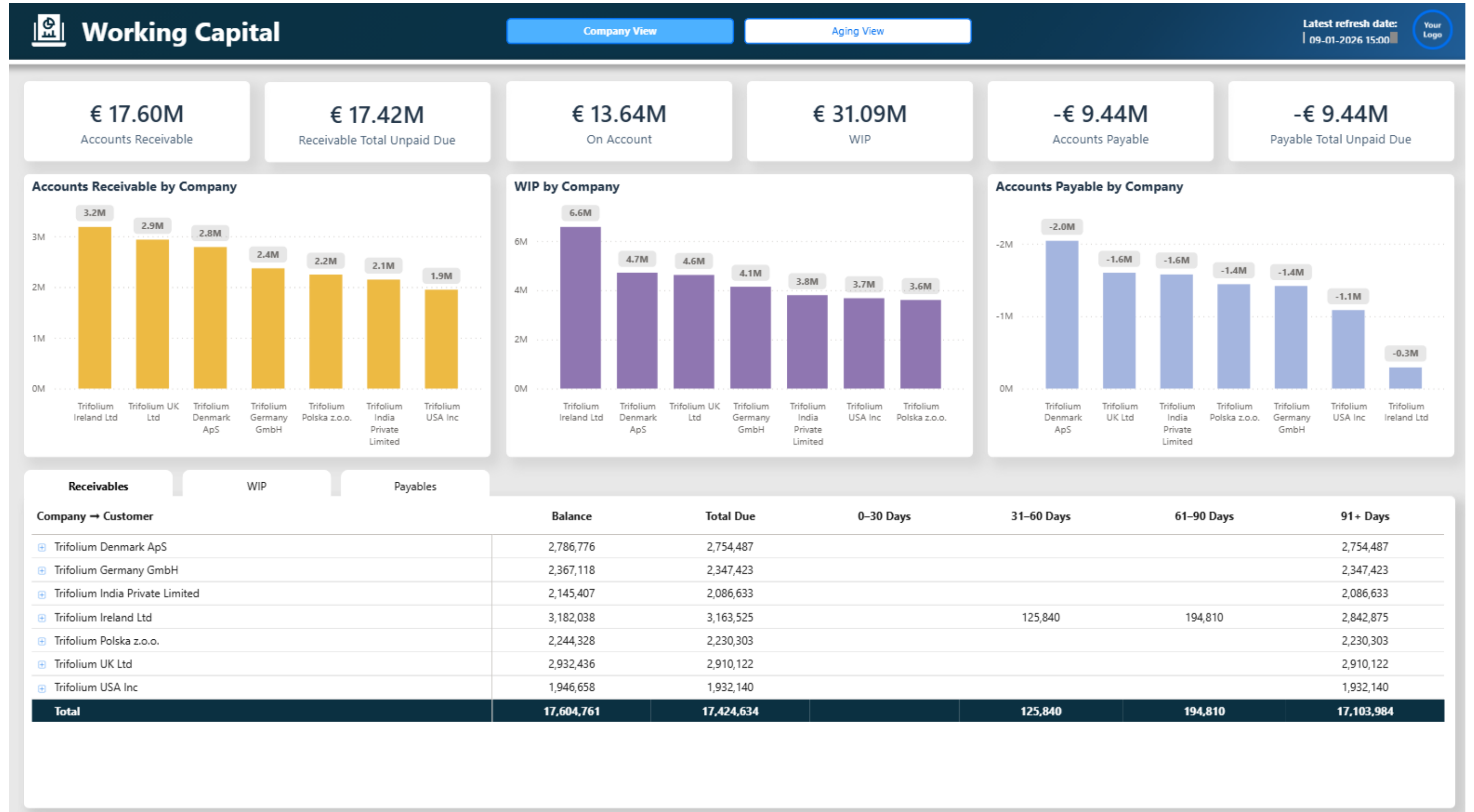
Management
Finance

Key KPI's

AR
WIP
AP
All Aged

Capabilities

Show numbers at consolidated level with drill into details



Working Capital

By Company – Compared to Last Year



Business Purpose

Provide a corporate overview of working capital in terms of AR, AP & WIP

Target Role

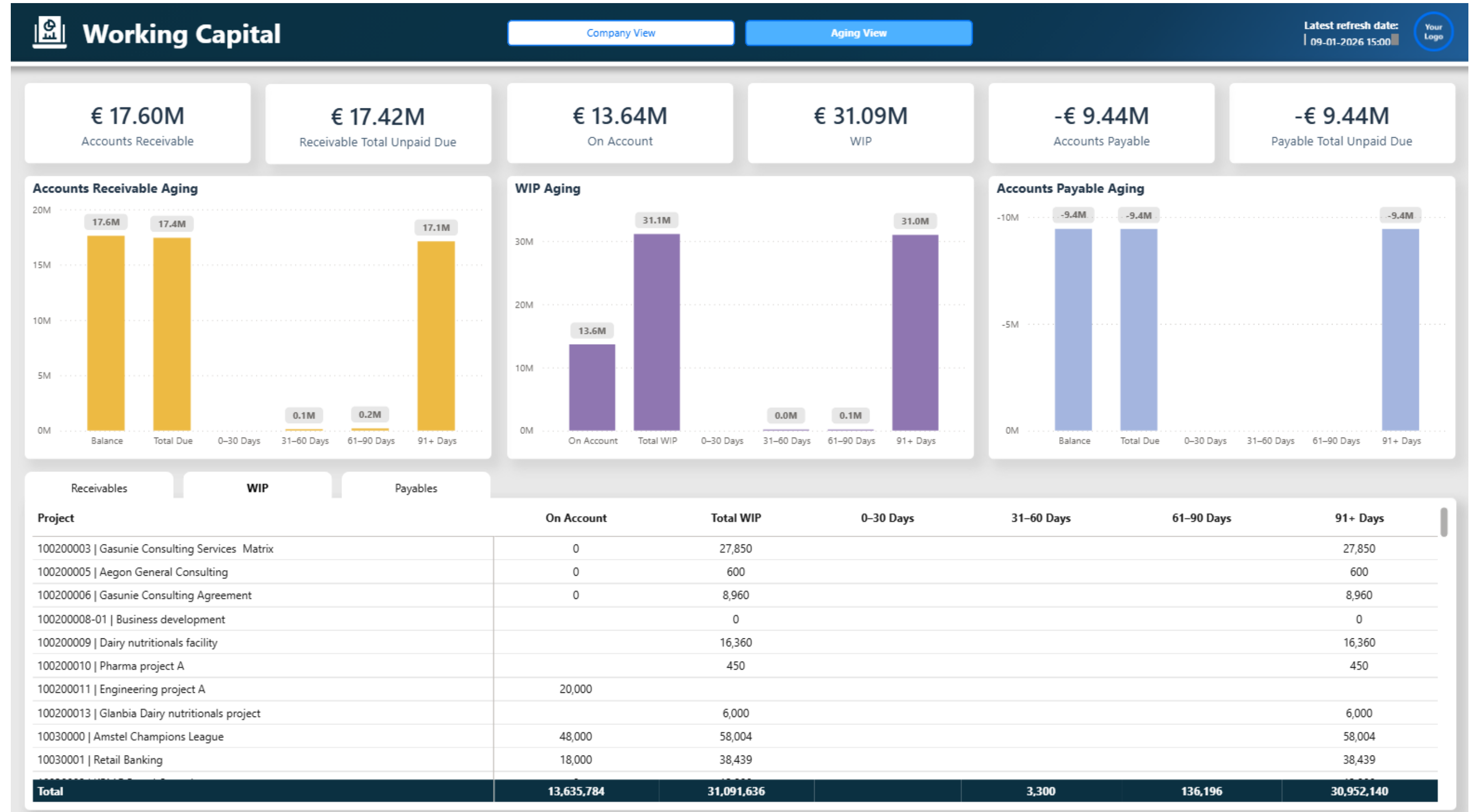
Management
Finance

Key KPI's

AR
WIP
AP
All Aged

Capabilities

Show numbers at consolidated level with drill into details



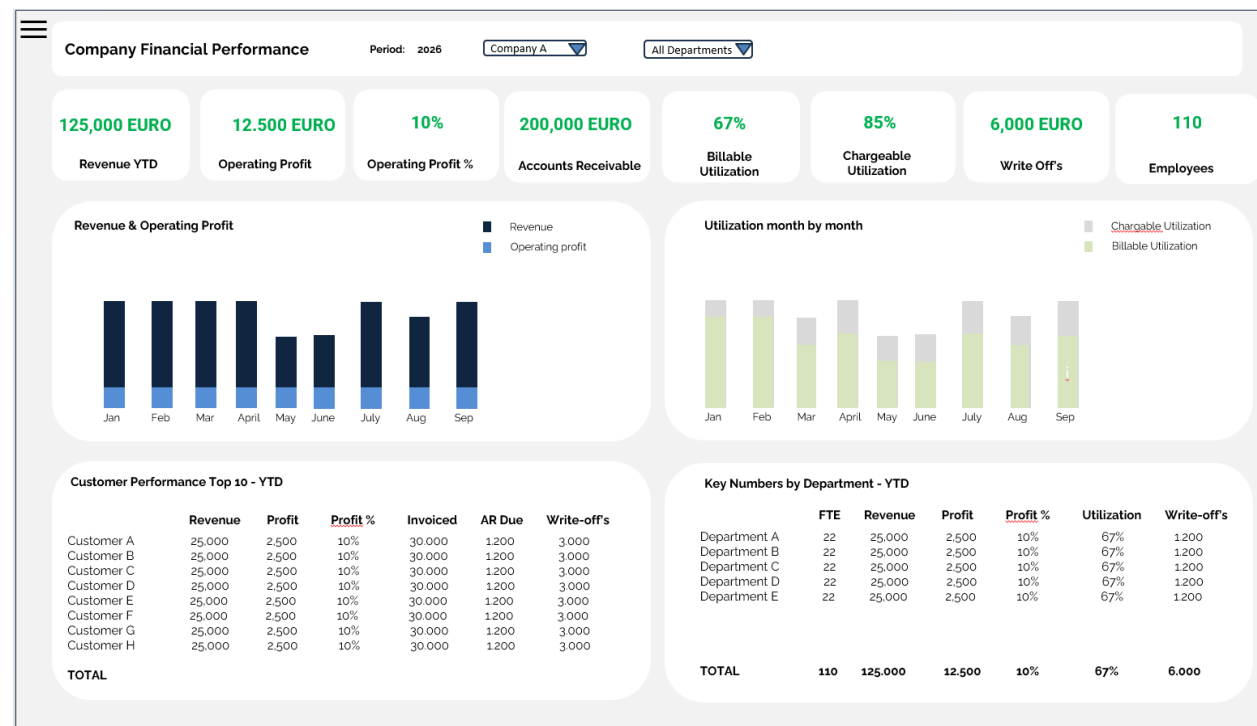
UPCOMING DASHBOARDS

1H 2026 Roadmap

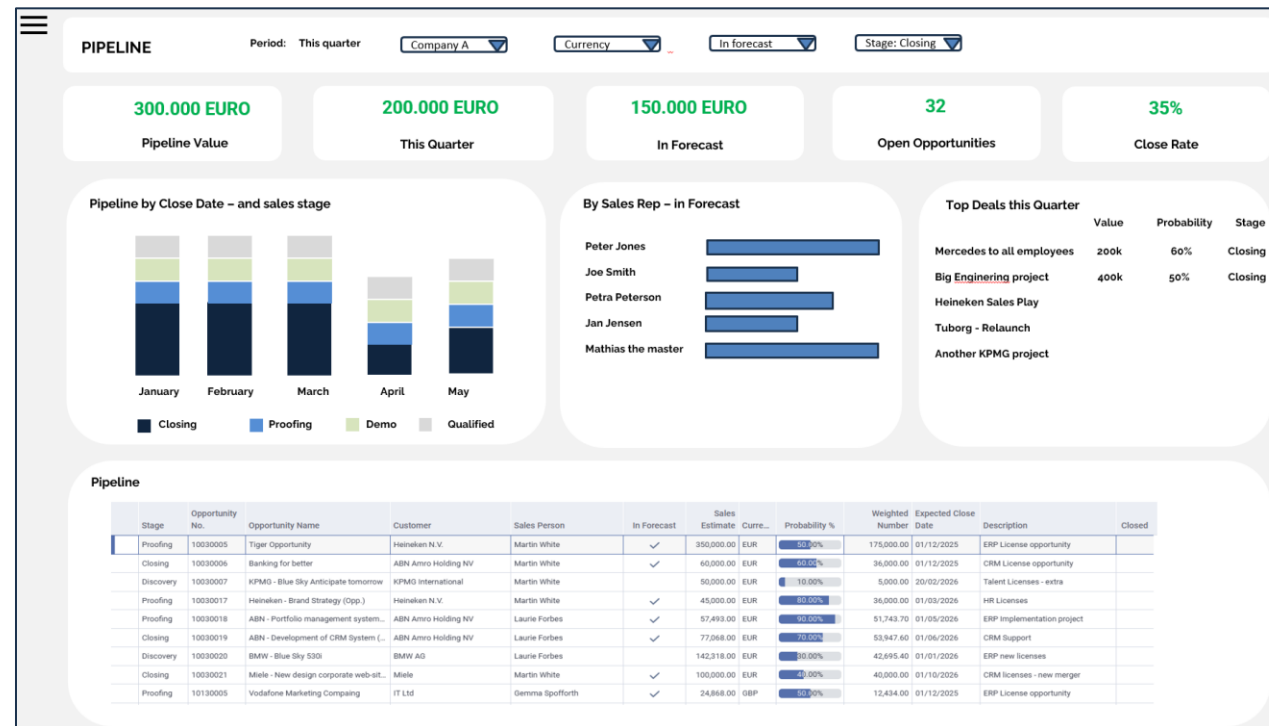


Upcoming Dashboards

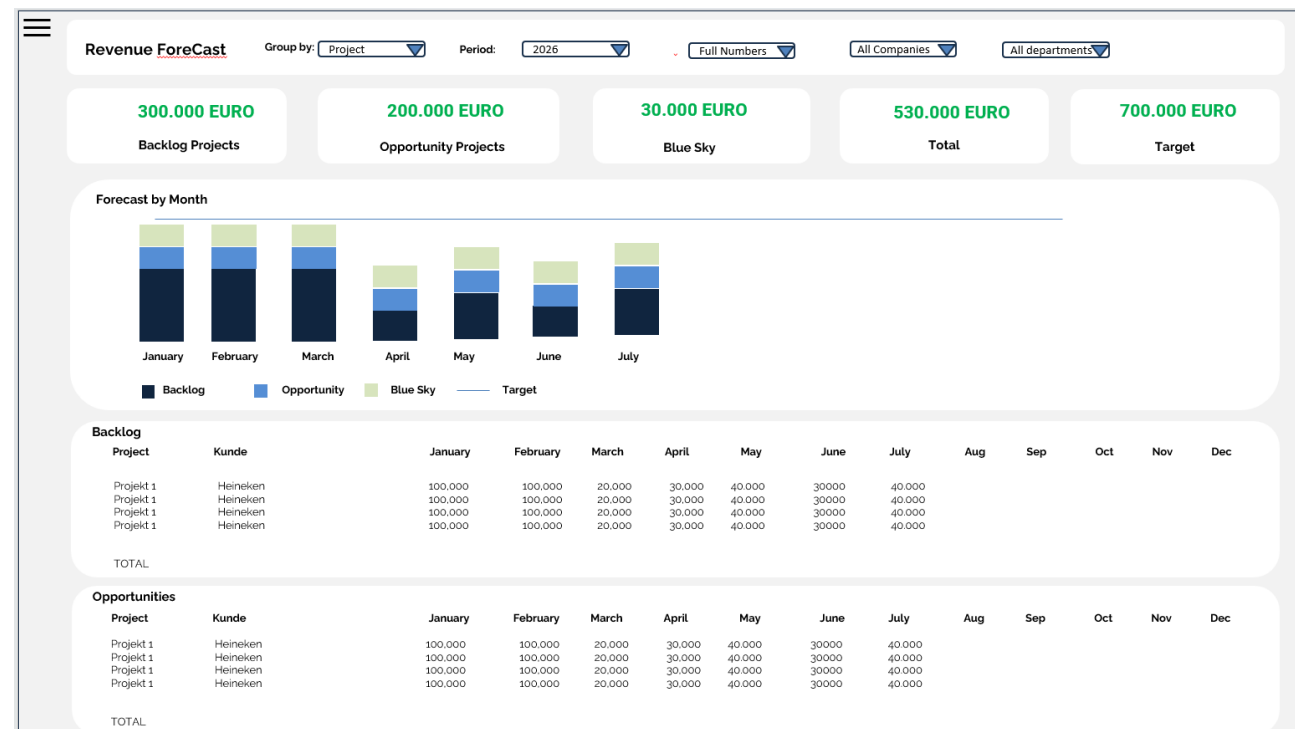
Spring 2026



Company Dashboard



Pipeline Dashboard



Revenue Forecast

✓ Upcoming dashboards that will be made available during Q2

✓ The visuals to the left reflect some design mockups of what we aim for

✓ More dashboards to apply to our package as we evolve it during the year